

IBM i Operating System Agent

LPAR2RRD is a free performance-monitoring and capacity-planning tool for **IBM Power Systems**.

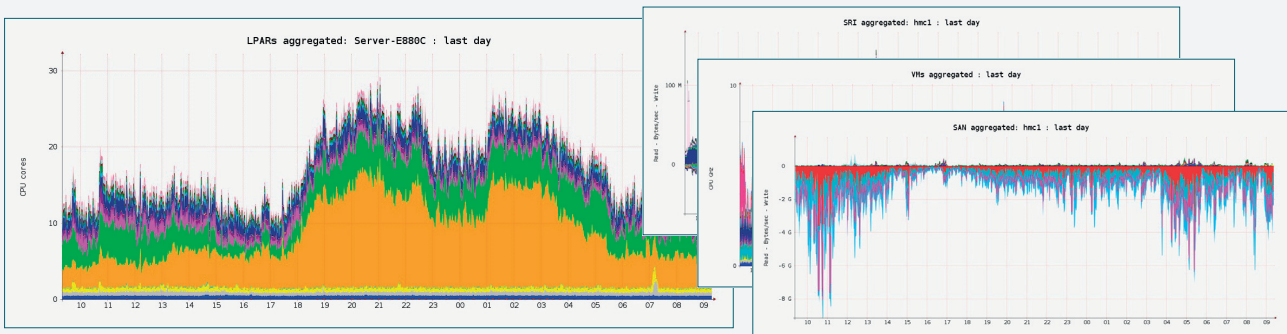
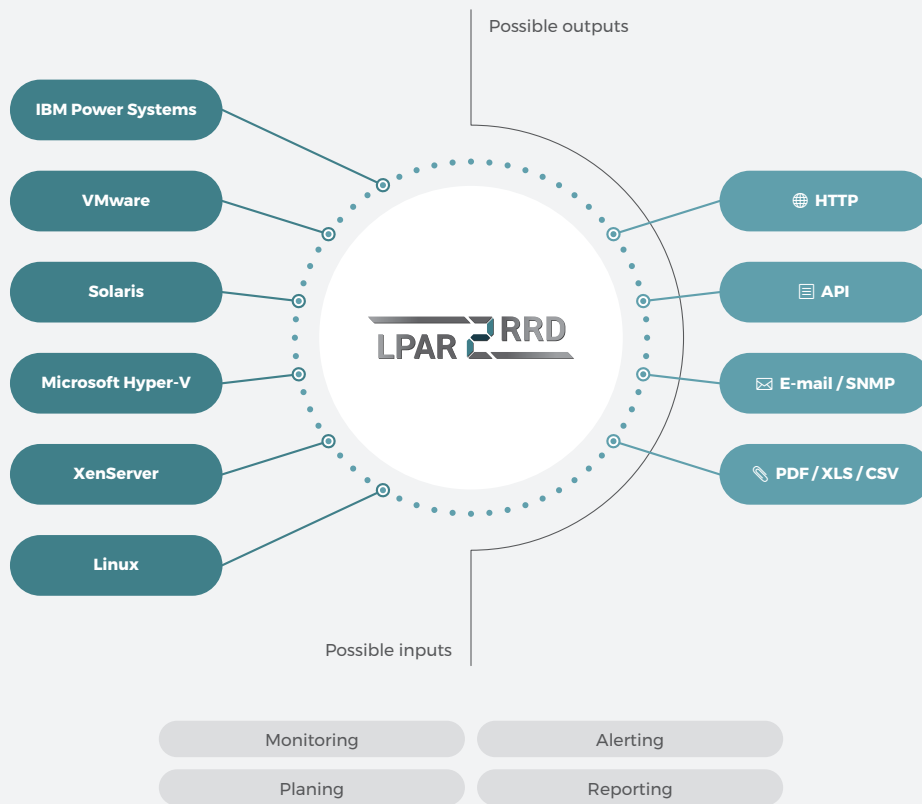
It collects performance data and visualizes recent, historical and future trends in utilization of your virtual environment. It is agentless (it receives everything from the HMC).

OS Agent for IBM is an enhanced feature for collection of a broader data set directly from the operating system. This information offers you a much deeper insight into the performance on your IBM i servers and LPARs.

The OS agent is written in the C language. It runs on the IBM i operating system where it regularly (every minute) collects performance data and transfers it every 20 minutes to the LPAR2RRD server where the data are saved and graphically presented through the web interface.

IBM i OS Agent provides the following sorts of data:

Graph name	Metric	Per System	Poll	Per ASP	OS cmd	Notes
WRKACTJOB	CPU %	✓			WRKACTJOB	CPU usage in %
CPU TOP	CPU core usage	✓				CPU core usage
IO TOP	IO usage	✓			WRKACTJOB	IO usage
Disk TOP	Disk busy %	✓				
	IO usage	✓				IO/sec
JOBS	Jobs	✓			WRKSYSSTS	
	Active jobs	✓				
	Active threads	✓				
ASP latency	Latency			✓		msec
ASP free	Free capacity			✓	WRKDSKSTS	GB
ASP used	Used capacity			✓	WRKDSKSTS	GB
ASP data	Data throughput			✓	WRKDSKSTS	MB/sec
ASP IOPS	IO			✓	WRKDSKSTS	IO/sec
POOL	Pool size		✓		WRKSYSSTS	GB
THREADS	Current threads		✓			
Faults	DB faults		✓		WRKSYSSTS	Faults/sec
	Non DB faults		✓			
Pages	DB pages		✓		WRKSYSSTS	Pages/sec
	Non DB pages		✓			
LAN	MB/sec	✓				MB/sec
	Packet/sec	✓				Packet/sec
	Discarded/sec	✓				Discarded/sec



We offer support for the product which brings you the following benefits:

- ▶ SLA: next business day response time for critical issues.
- ▶ Source code.
- ▶ Regular health checks.
- ▶ Priority in implementation of new features based on your request.
- ▶ Creating customized reports.