

IBM Power Systems edition

LPAR2RRD is a free performance monitoring and capacity planning tool for **IBM Power System** servers and x86 servers running **VMware**.

It collects performance data and generates actual, historical and future trends utilization graphs of your virtual environment. It is agentless (it receives everything from the management stations like vCenter or HMC).

Features:

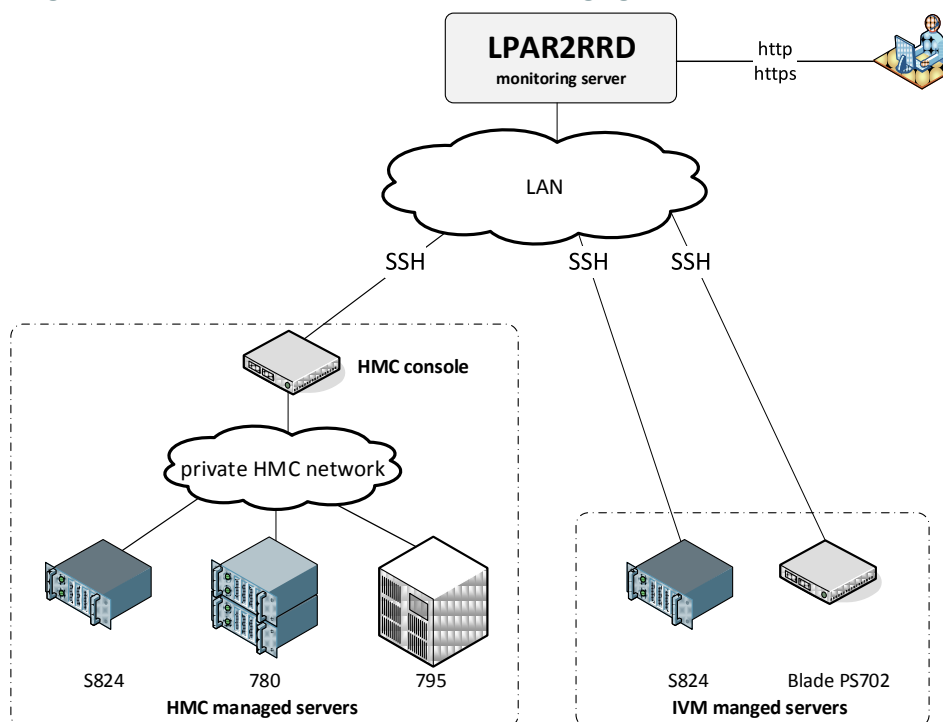
- Graphing of CPU pool and LPAR utilization
- Trends, historical reports
- CPU Workload Estimator: it is able to predict CPU utilization on other HW based on rPerf benchmark
- Resource Configuration Advisor: it scans CPU/Mem/IO utilization data and advises configuration changes
- Custom Groups: grouping utilization of LPARs or CPU pools regardless where they physically run in one graph
- Alerting

Collected data set can be extended about data provided by the OS Agents or from NMON files.

OS agent / NMON metrics:

- | | |
|--|--|
| <ul style="list-style-type: none"> • CPU utilization • Memory utilization • Paging rate • Paging usage | <ul style="list-style-type: none"> • FC and vSCSI adapter throughput • LAN adapter throughput • SEA adapter throughput • AME (Active Memory Expansion) usage |
|--|--|

The following diagram describes how the LPAR2RRD collecting agent-less data:



LPAR2RRD tool is free software. You can redistribute it and/or modify it under the terms of the GNU General Public License v3.

We offer support of the product which brings you the following benefits:

- SLA: next business day response time for critical issues
- regular health checks
- priority in implementation of new functionality which the customer requests
- creating customized reports based on the customer's requests
- full version of the product contains:
 - CPU Workload Estimator based on rPerf or CPW benchmark
 - Live Partition Mobility and generally LPAR migration support
 - Unlimited number of items in one Custom Group

News in the latest version 4.80 – IBM Power Systems edition:

- CPU Workload Estimator supports SMT based rPerf
- Heatmap feature for CPU and Memory
- Custom Groups enhancement - set of custom groups
- Alerting thresholds can be specified in "%"
- OS agent
 - Response time per FC/vSCSI adapter
 - vSCSI adapter throughput

Future:

- AS400 OS agent (Nov 2015)
- LPAR2RRD and STOR2RRD integration

On the following pictures, you can see some examples of graphs provided by LPAR2RRD:

